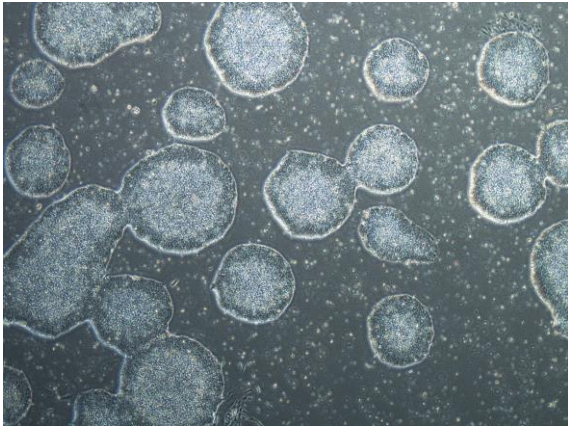
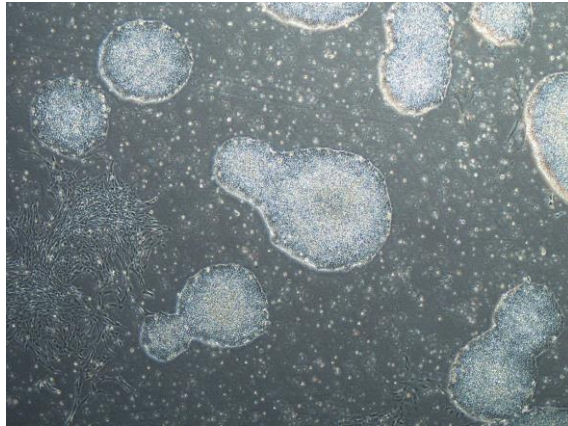


【 CiRA-j-1160 】 Morphology of iPSC colonies

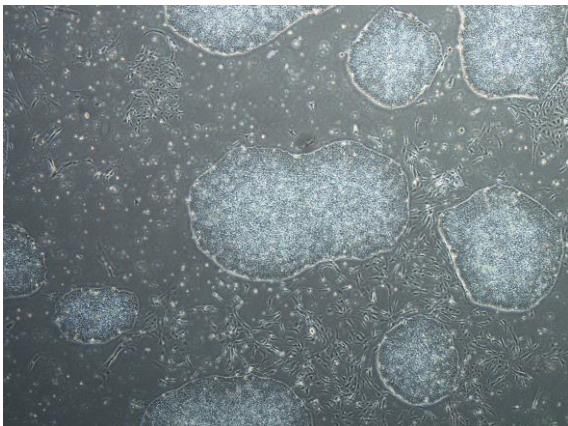
CiRA-j-1160-A: passage-3



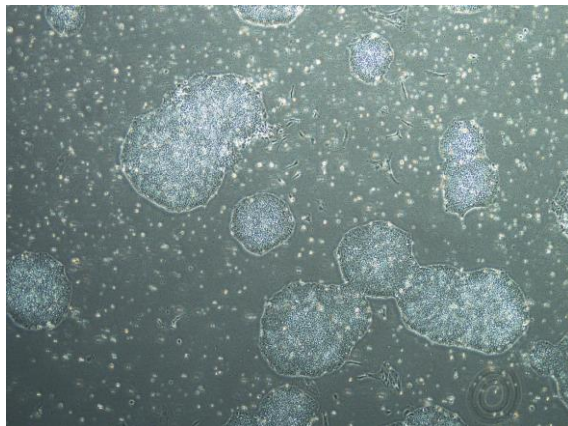
CiRA-j-1160-B: passage-3



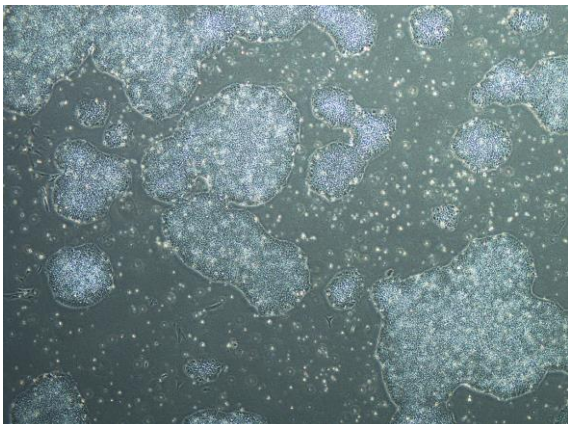
CiRA-j-1160-C: passage-3



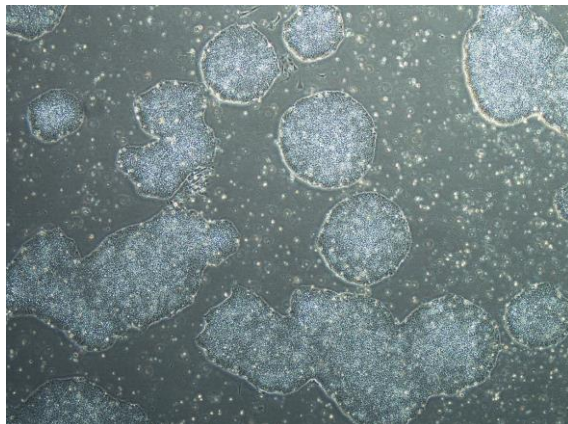
CiRA-j-1160-D: passage-3



CiRA-j-1160-E: passage-3



CiRA-j-1160-F: passage-3



(All images were captured at 4x magnification)